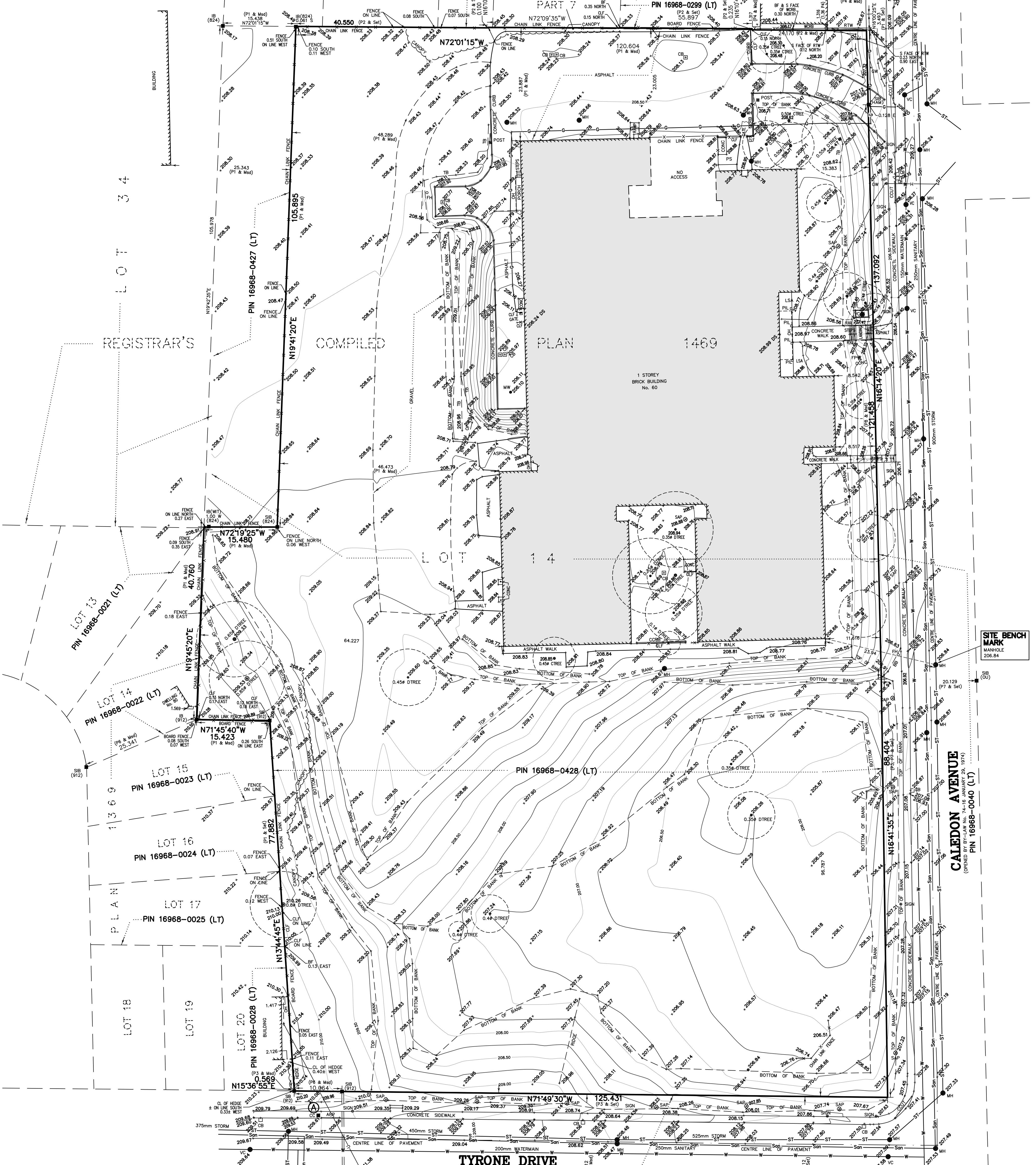


TOPOGRAPHIC SURVEY
 OF PART OF
 LOT 13
 AND ALL OF
 LOT 14
 REGISTRAR'S COMPILED PLAN 1469
 IN THE
 CITY OF HAMILTON

SCALE 1:400 METRIC

S.D. McLAREN, O.L.S. - 2020



- LEGEND:**
- DENOTES MONUMENT SET
 - IRON BAR
 - PLASTIC BAR
 - CUT CROSS
 - ▬ STANDARD IRON BAR
 - SSB SHORT STANDARD IRON BAR
 - 824 A.T. McLAREN, O.L.S.
 - 912 A.J. CLARKE, O.L.S.
 - JDB J.D. BARNES LIMITED
 - HAM CITY OF HAMILTON
 - WIT WITNESS
 - OJ ORIGIN UNKNOWN
 - Md MEASURED
 - CLF CHAIN LINK FENCE
 - BF BOARD FENCE
 - CCRB CONCRETE CURB
 - WCR WOOD CURB
 - LSA LANDSCAPED AREA
 - PIL PILLAR
 - DS DOOR SILL
 - GF GARAGE FLOOR
 - RTW RETAINING WALL
 - CCUT CURB CUT
 - HP HYDRO POLE
 - GW GUY WIRE
 - FF FLAG POLE
 - CCNC CONCRETE
 - FH FIRE HYDRANT
 - VC VALVE CHAMBER
 - MH MANHOLE
 - CB CATCH BASIN
 - TS TOP OF BANK
 - BB BOTTOM OF BANK
 - CTREE CONIFEROUS TREE
 - DTREE DECIDUOUS TREE
 - DAMER DAM
 - P1 62R-20611
 - P2 62R-6781
 - P3 INSTRUMENT AB85668
 - P4 PLAN BY ASHENBURST NOUMS O.L.S. DATED JULY 28, 2004
 - P5 PLAN BY J.D. BARNES O.L.S. DATED JULY 28, 1992
 - P6 REGISTERED PLAN 1369
 - P7 INSTRUMENT A8173441
 - P8 CITY OF HAMILTON PLAN 22-943
 - P9 NOT TO SCALE

- LEGEND:**
- PROPERTY BOUNDARY
 - BUILDING BOUNDARY
 - BELL CABLE
 - GAS MAIN
 - WATER MAIN
 - SANITARY SEWER
 - STORM SEWER
 - OVERHEAD UTILITIES
 - BURIED HYDRO LINES
 - CANOPY
 - TREE CANOPY
 - SAPLING

BEARING NOTE:
 BEARINGS ARE UTM GRID, DERIVED FROM OBSERVED REFERENCE POINTS A AND B, BY REAL TIME NETWORK OBSERVATIONS, UTM ZONE 17, NAD83 (CSRS) (2010.0)

NOTE:
 DISTANCES ARE GROUND AND CAN BE CONVERTED TO GRID BY MULTIPLYING BY THE COMBINED SCALE FACTOR OF 0.999673144

INTEGRATION DATA

POINT ID	NORTHING	EASTING
ORP (D)	4786452.937	560430.201
ORP (B)	4786662.210	560613.288

COORDINATES CANNOT, IN THEMSELVES, BE USED TO RE-ESTABLISH CORNERS OR BOUNDARIES SHOWN ON THIS PLAN.

NOTE:
 UNDERGROUND SERVICE AND UTILITY LOCATIONS WERE LOCATED BY CITY OF HAMILTON DRAWING No. K-278

UNDERGROUND SERVICE AND UTILITY LOCATIONS MUST BE VERIFIED PRIOR TO CONSTRUCTION

METRIC NOTE:
 DISTANCES AND COORDINATES SHOWN ON THIS PLAN ARE IN METRES AND CAN BE CONVERTED TO FEET BY DIVIDING BY 0.3048

BENCHMARK:
 MONUMENT 07720020068

ROUND IRON BAR WITH BRASS CAP LOCATED IN GLANBROOK 10.0m EAST OF CENTRELINE OF WEST 5th STREET 25.0m NORTH OF CENTRELINE OF RYMAL RD 3.0 EAST OF SIDEWALK 8.0m NORTHWEST OF TRAFFIC SWITCHBOX

ELEVATION: 229.005 METRES CGVD-1928:1978

SURVEYOR'S CERTIFICATE:
 I CERTIFY THAT:
 1. THIS SURVEY AND PLAN ARE CORRECT AND IN ACCORDANCE WITH THE SURVEY ACT, THE SURVEYORS ACT AND THE REGULATIONS MADE UNDER THEM
 2. THE SURVEY WAS COMPLETED ON 9th JUNE, 2020

DATE: JUNE 25, 2020
 S. DAN McLAREN, O.L.S.

© S.D. McLAREN, O.L.S. - 2020. NO PERSON MAY COPY, REPRODUCE, DISTRIBUTE OR ALTER THIS PLAN IN WHOLE OR IN PART WITHOUT THE WRITTEN PERMISSION OF S.D. McLAREN, O.L.S.

A.T. McLaren Limited
 LEGAL AND ENGINEERING SURVEYS
 69 JOHN STREET SOUTH, SUITE 230
 HAMILTON, ONTARIO, L8N 2B9
 PHONE: (905) 527-8559 FAX: (905) 527-0032

Drawn: JB
 Checked: RBM
 Date: MW
 Scale: 1:400
 Dwg No: 36358